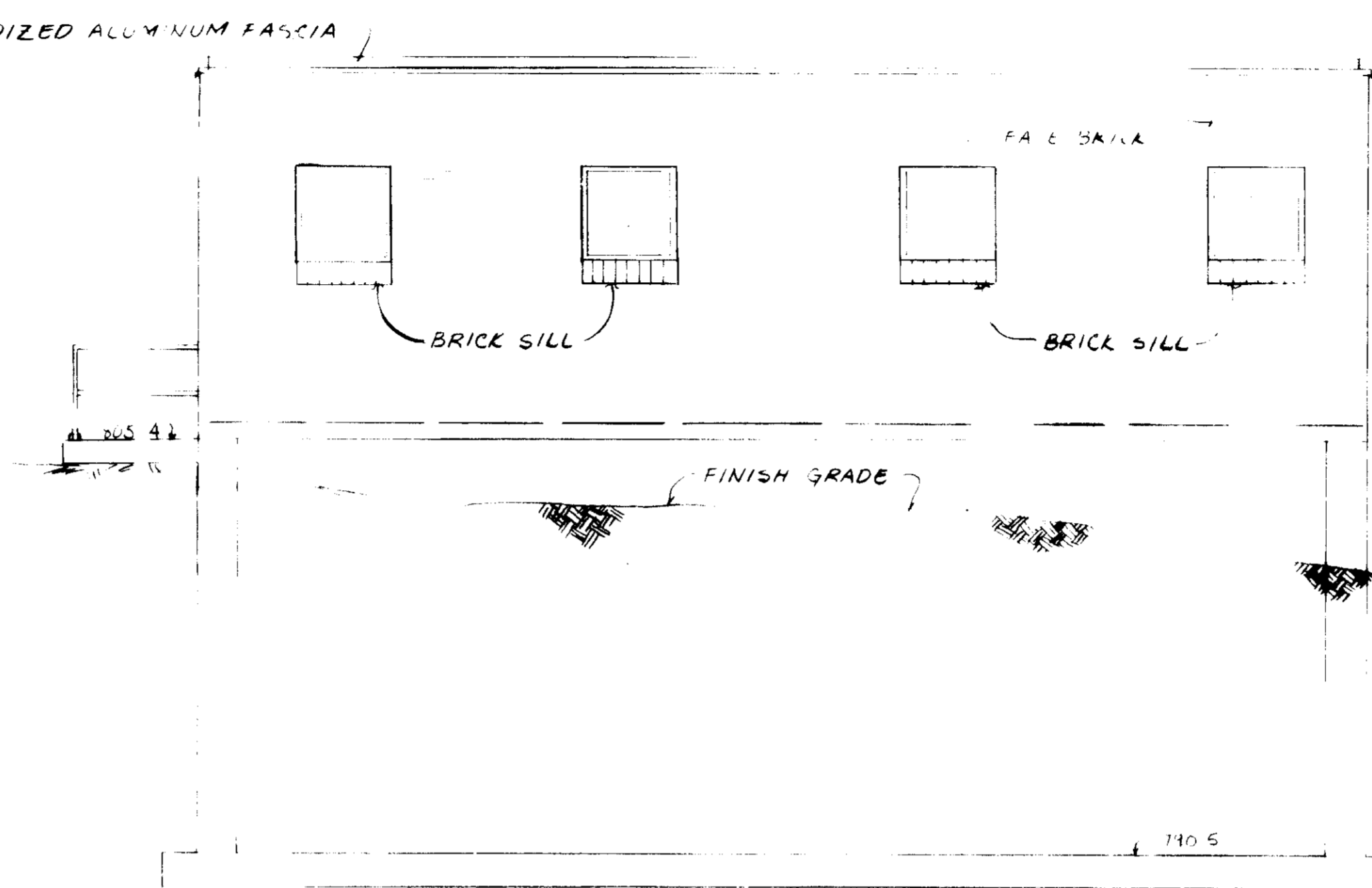
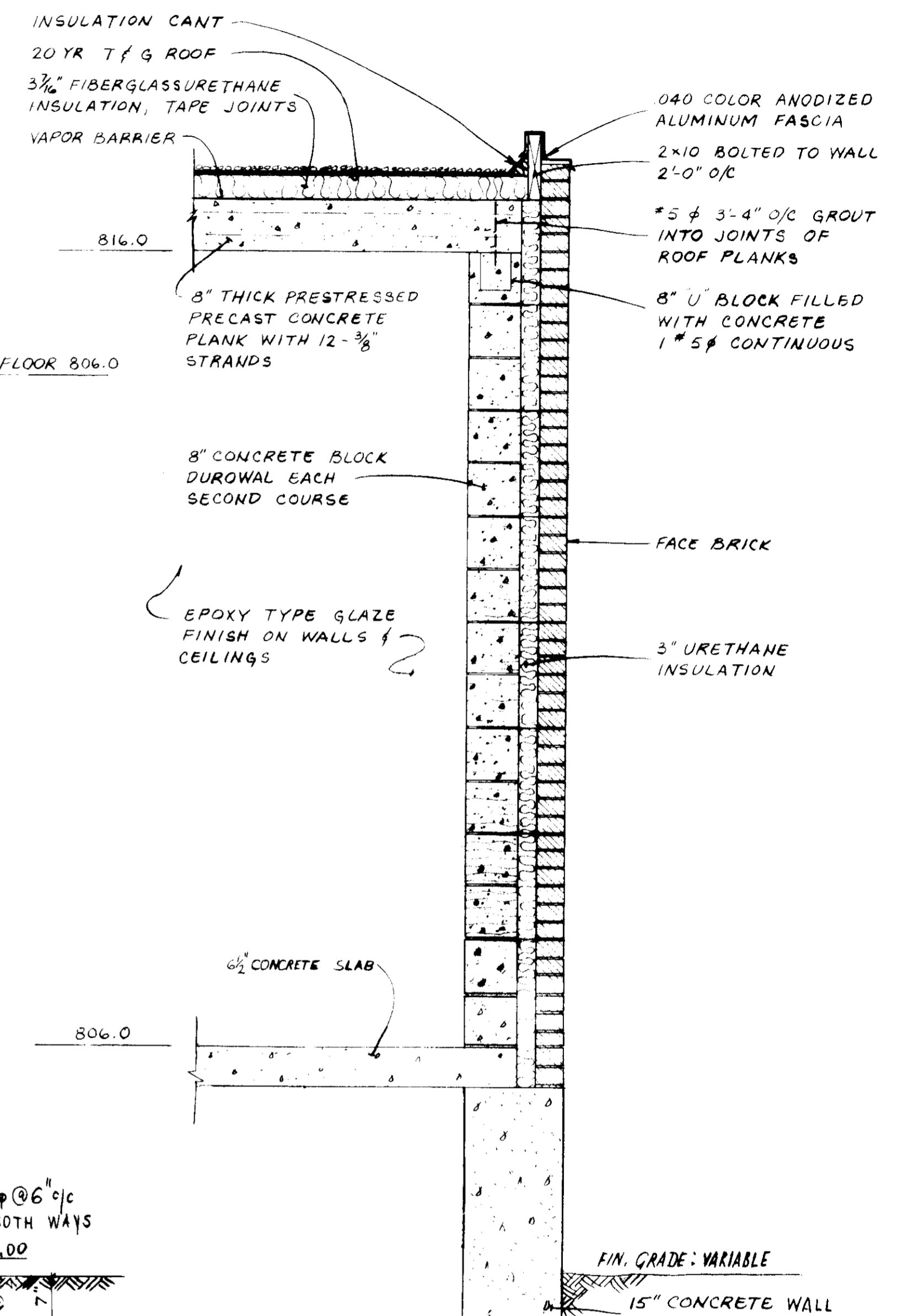


SOUTH ELEVATION
1/4" = 1'-0"

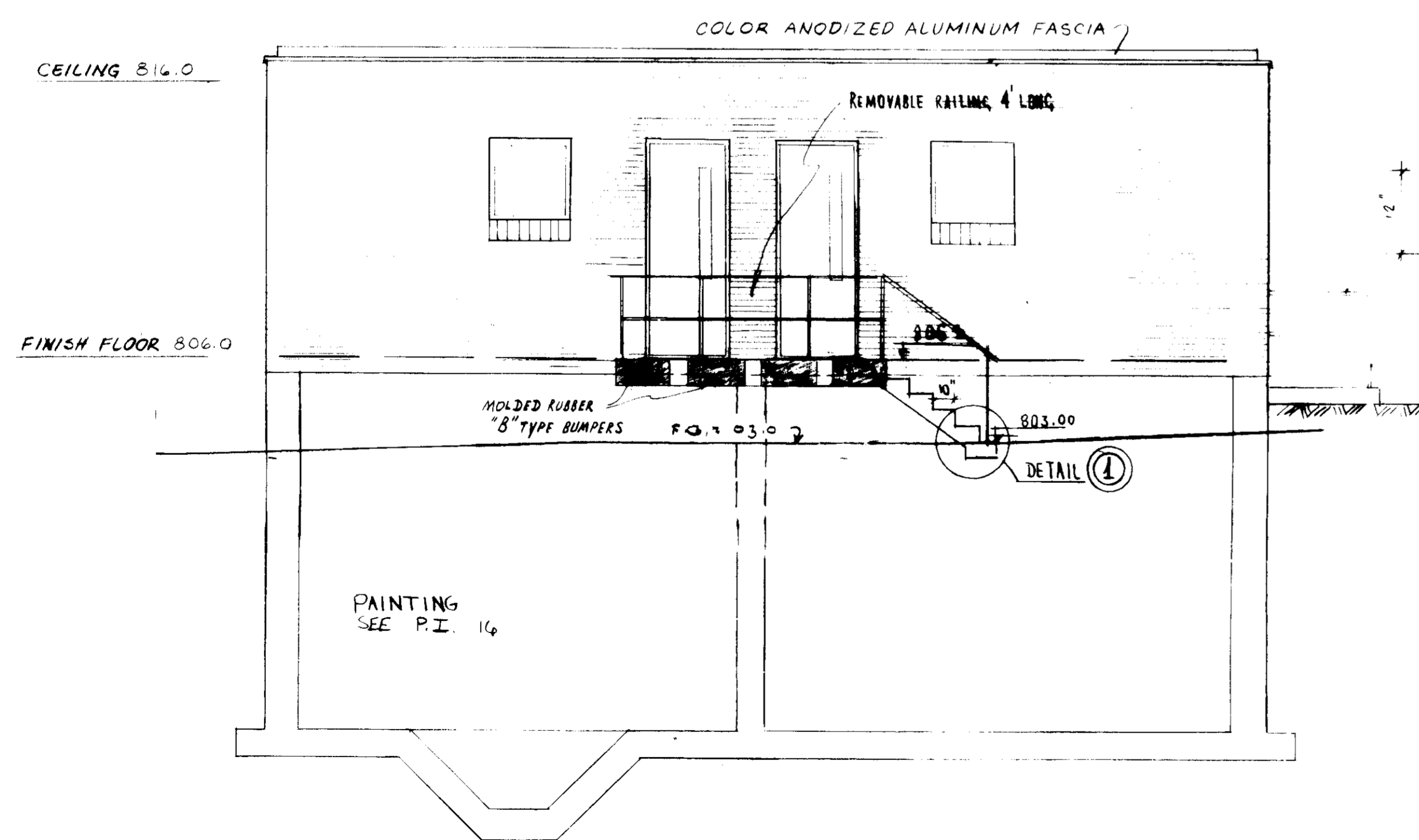


EAST ELEVATION
1/4" = 1'-0"

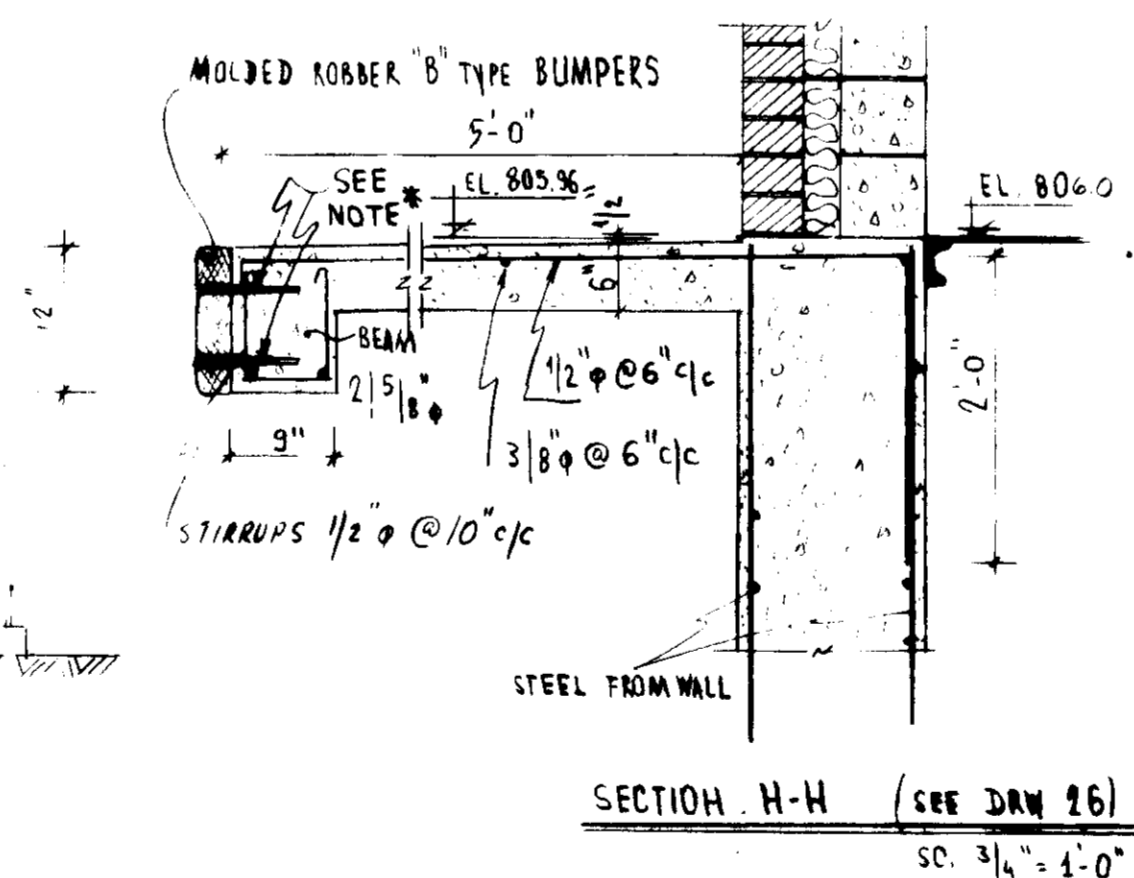
NOTE: CONTRACTOR SHALL REFER TO DRWG. HV-1 FOR LOUVRE LOC.



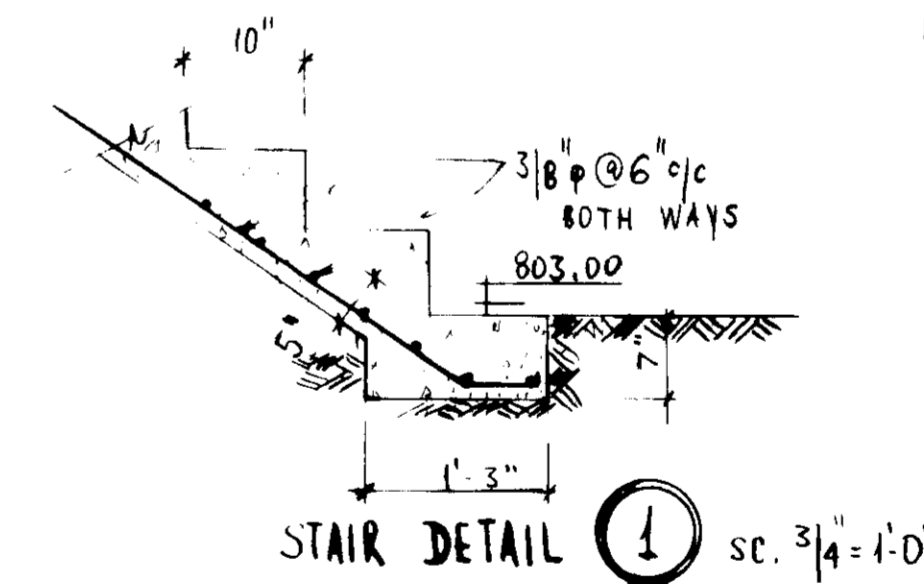
TYPICAL WALL SECTION
3/4" = 1'-0"



WEST ELEVATION
1/4" = 1'-0"

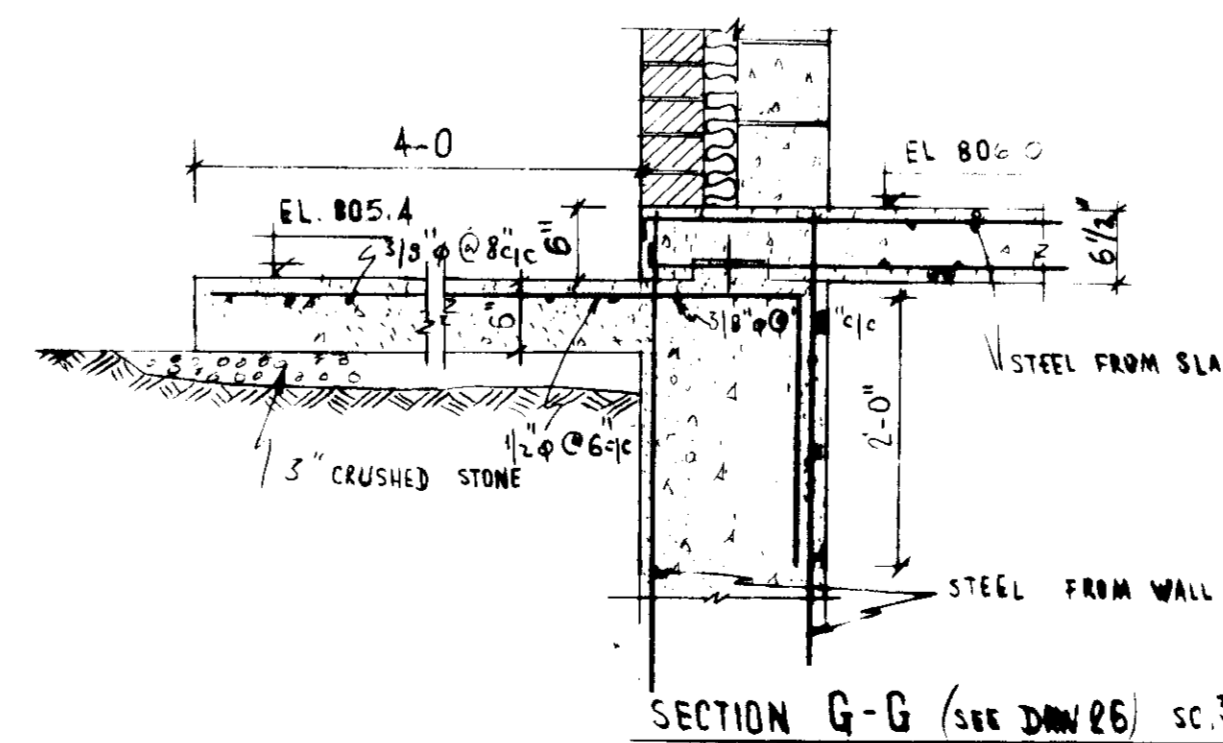


SECTION H-H (SEE DRW 26)
3/4" = 1'-0"

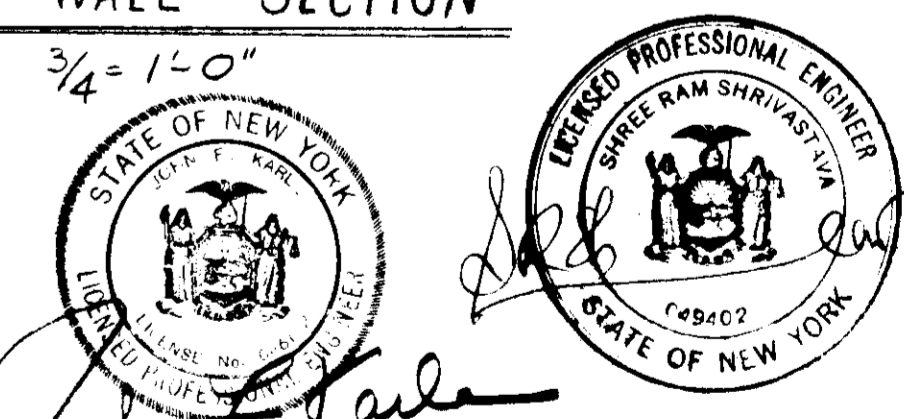
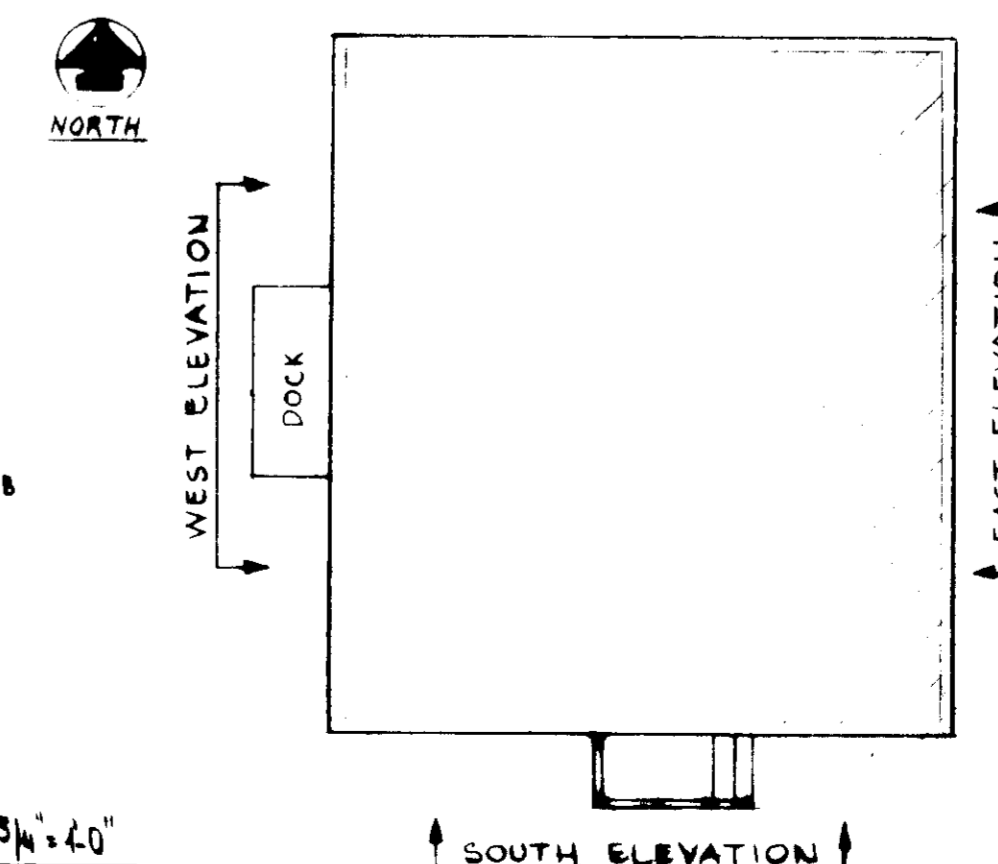


STAIR DETAIL (1) sc. 3/4" = 1'-0"

NOTE #: FOR BUMPERS USE (4) 3/4" x 6" PRE-SET ANCHOR BOLTS, WASHERS AND EXPANSION SHIELDS



SECTION G-G (SEE DRW 26) sc. 3/4" = 1'-0"



CONTRACT D - SEWAGE TREATMENT PLANT
HONEYE LAKE - COUNTY SEWER DISTRICT
ONTARIO COUNTY, NEW YORK
PROJECT NO. C-36-808

ARCHITECTURAL (P.I. 5)
FILTER CONTROL BUILDING

ELEVATIONS & SECTIONS

William C. Larsen, P.E., P.C.

CIVIL - SANITARY - MUNICIPAL
ENGINEERING

44 SAGINAW DRIVE - ROCHESTER, N.Y. 14623

DATE	SCALE	REF.	BY	CHK.	JOC	DRWG. NO.
NOV. 1977	as shown		JWT	SRS	1630 1b7	28

REV. MAY 1978
NECESSARY CHANGES IN ELEVATIONS.
NECESSARY CHANGES IN STAIRS ON SOUTH SIDE.